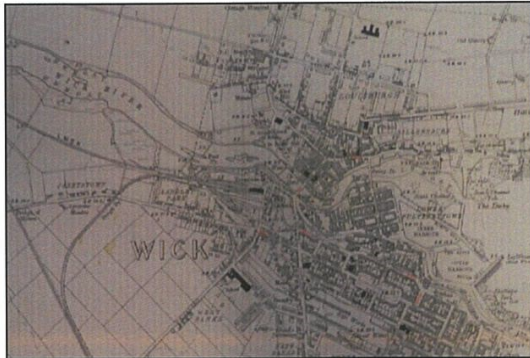


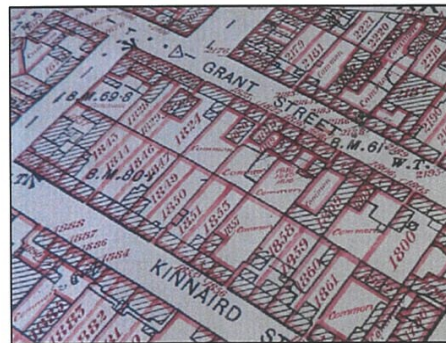
## Introduction to Maps and Plans in the Caithness Archives Centre

The most detailed and comprehensive sets of plans of the county are those of the **Ordnance Survey**. We hold copies of most of the first and second editions, which were made in 1872 and 1903.

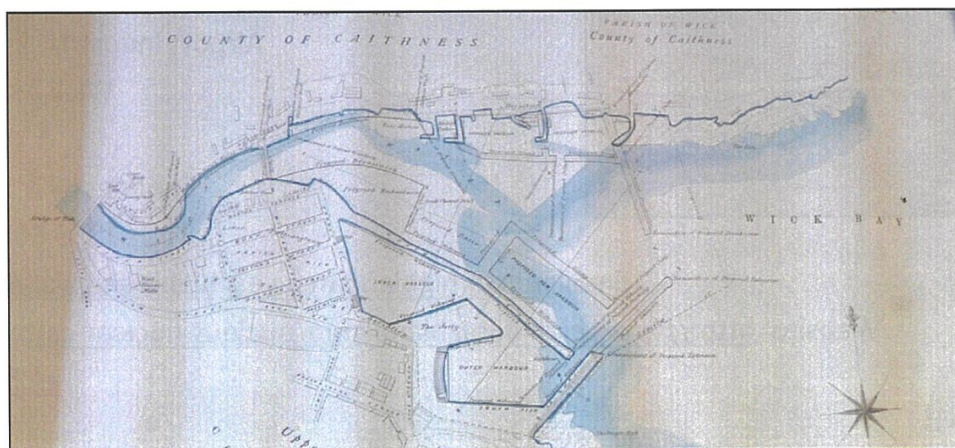


These maps exist in two scales: 6 inches to the mile (1:10,000), which give a good overview, and 25 inches to the mile (1:2500), which are far more detailed, showing individual buildings. The image on the left is from the 6 inch map of Wick in 1903.

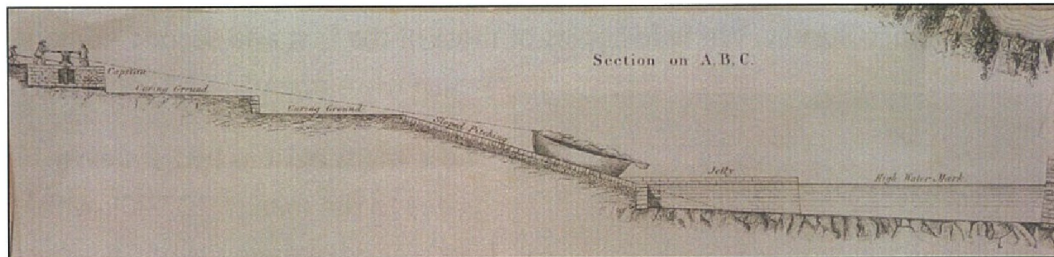
The larger scales can show a very high level of detail. For instance, some maps of urban areas were enlarged to a scale of 1:1250 for the Inland Revenue in 1912, as this map of Pulteneytown shows:



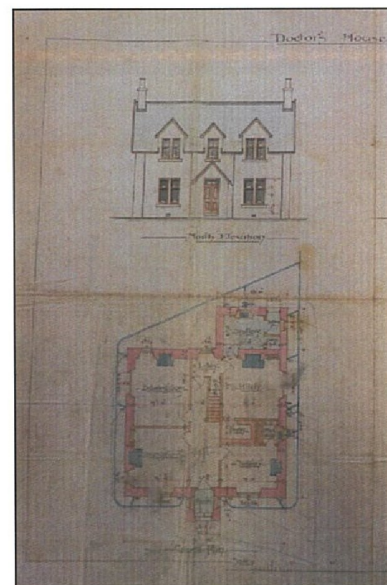
Some collections in the Archive include privately-made maps. This is part of a plan of Wick bay:



Some maps even include charming drawings of the locations they depict. Here is a detail from an 1843 plan of Sarclet harbour, showing how boats were winched up from the jetty:



In addition to maps of the county, the Archives also hold a number of architects' plans of properties, including the Sinclair Macdonald of Thurso collection. These can be floor plans, elevations, and even artists' impressions of how the buildings will look when they're built:



Nucleus: The Nuclear and Caithness Archives,  
Airport Industrial Estate,  
Wick Airport,  
Wick,  
Caithness KW1 4QS  
Tel: 01955 602 444

Email: [north.highlandarchive@highlifehighland.com](mailto:north.highlandarchive@highlifehighland.com)

Website: <http://www.highlifehighland.com/nucleus-nuclear-caithness-archives/>